



Time : 1 Hr.

**CLASS24**  
(Genius Seed Program)

Max. Marks : 60

PAPER CODE

000

FORM NUMBER

--	--	--	--	--	--	--	--

## NSTSE (STAGE-1) MOCK TEST

(ACADEMIC SESSION 2025-2026)

### Pre Foundation Division

### CLASS VI

### MOCK TEST # 02

#### PLEASE READ THE FOLLOWING INSTRUCTIONS CAREFULLY

1.	Duration of Test is 60 Minutes and Questions Paper Contains 60 Questions. Total marks are 60.
2.	The Paper Consists of Five Sections
	<b>Section-I</b> (Mathematics - 25 Questions) <b>Section-II</b> (Physics - 10 Questions) <b>Section-III</b> (Chemistry - 10 Questions) <b>Section-IV</b> (Biology - 10 Questions) <b>Section-V</b> (General Awareness - 05 Questions)
3.	All questions are compulsory and carry equal marks. There is no negative marking. Use of calculator is not permitted.
4.	There is only one correct answer hence mark one choice only.
5.	Every correct answer will be awarded one mark.

### Prepare to be a Winner With Class24

Science Olympiads

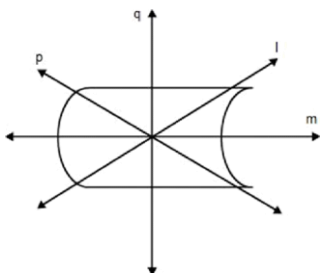
Mathematics Olympiads

NSO, IOS, NSTSC, VVM, ICQ

UIMO, IMO, IOM, IPM, NMTC

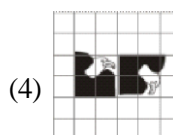
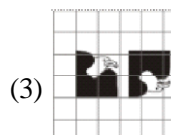
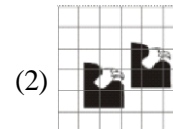
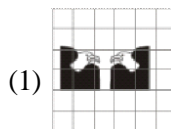
**MATHEMATICS**

- If the number 86\_296 is divisible by 3, then the digit in the blank among the following is \_\_\_\_.  
(1) 5      (2) 0      (3) 2      (4) 6
- In a Mathematics test, the following marks were obtained by 40 students.  
5, 7, 8, 9, 3, 2, 1, 6, 5, 8, 8, 5, 4, 7, 2, 6, 5, 4, 9, 1, 7, 3, 8, 9, 5, 4, 6, 7, 8, 3, 5, 4, 7, 8, 3, 2, 7, 9, 5, 9.  
The number of students who obtained less than 5 marks is \_\_\_\_.  
(1) 10      (2) 8      (3) 7      (4) 13
- The perimeter of an isosceles triangle is 26 cm and the length of one of the sides is 6 cm. The lengths of the other two equal sides are \_\_\_\_.  
(1) 5 cm and 5 cm  
(2) 10 cm and 10 cm  
(3) 7.5 cm and 7.5 cm  
(4) 15 cm and 15 cm
- Oh! I am really heavy. If you add 30 kg to my weight, I will weigh a quintal. My weight is \_\_\_\_kg.  
(1) 10      (2) 50      (3) 70      (4) 100
- In a test, Madhu gets 17 marks out of 20, Rahul gets 85 out of 100, Reena gets 45 out of 50 and Mohan gets 7 out of 10. The best student among four is \_\_\_\_.  
(1) Madhu      (2) Rahul  
(3) Mohan      (4) Reena
- In the figure below, the mirror line or the axis of symmetry is \_\_\_\_.



- (1) line q      (2) line p  
(3) line l      (4) line m

- Which pair of eagle pictures shows reflection?



- A line segment is symmetrical about its \_\_\_\_.  
(1) angle bisector  
(2) perpendicular bisector  
(3) starting point  
(4) end point
- One hectare = \_\_\_\_  
(1) 10000 km<sup>2</sup>  
(2) 10000 cm<sup>2</sup>  
(3) 10000 m<sup>2</sup>  
(4) none of above
- Helen claims that  $a^3 = a$ . Is her statement true?  
(1) Always      (2) Never  
(3) Can't tell      (4) Sometimes
- $CD \cong EF$  is read as \_\_\_\_.  
(1) Line CD is congruent to line EF.  
(2) Line segment CD is congruent to line segment EF.  
(3) Ray CD is congruent to ray EF.  
(4) Line CD is parallel to line EF.
- Two cross road, each of width 8 m, run at right angle through the centre of a rectangular park of length 80 m and breadth 56 m and parallel to its sides. Find the area of roads.  
(1) 1556 m<sup>2</sup>      (2) 2000 m<sup>2</sup>  
(3) 1024 m<sup>2</sup>      (4) 1480 m<sup>2</sup>

13. The minute hand of circular clock is 18 cm long. How far does the tip of minute hand move in 1 hr ? ( $\pi = 3.14$ )

- (1) 93.2 cm (2) 113.04 cm  
(3) 90.2 cm (4) 91.2 cm

**Direction (Q.14 to Q.15) :** Read the table carefully and answer the questions given below :

Marks obtained	Tally marks
30-39	
40-49	
50-59	
60-69	
70-79	
80-89	
90-99	

14. How many students are getting 50 to 59 marks?  
(1) 3 (2) 9 (3) 2 (4) 10

15. If 40 is the passing marks, how many have failed?  
(1) 3 (2) 8 (3) 4 (4) 9

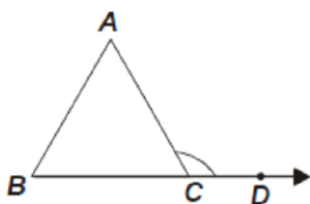
16. What should be added to  $(x^2 + 2xy + 2y^2)$  to obtain  $(2x^2 + 3xy)$   
(1)  $x^2 + xy - y^2$  (2)  $2x^2 + xy + y^2$   
(3)  $x^2 + xy - 2y^2$  (4)  $x^2 + xy + 2y^2$

17. One-third revolution equals  
(1)  $60^\circ$  (2)  $120^\circ$  (3)  $270^\circ$  (4)  $360^\circ$

18.  $13\frac{3}{4}$  liters of milk was poured equally into 7 small containers. How much milk will be there in each container ?

- (1)  $\frac{17}{28}$  litre (2)  $\frac{55}{28}$  litre  
(3)  $\frac{14}{28}$  litre (4)  $\frac{16}{28}$  litre

19. In the adjoining figure, find  $\angle ACD$ , if  $AB = BC = AC$ .



- (1)  $90^\circ$  (2)  $150^\circ$  (3)  $120^\circ$  (4)  $180^\circ$

20. In a class test containing 30 question 4 marks are awarded for every correct answer and  $(-2)$  marks are awarded for every incorrect answer and no marks for not attempting in the question. Gurpreet attempts all questions but only 18 of her answers are correct. What is her total score?

- (1) 48 marks (2) 30 marks  
(3) 36 marks (4) 28 marks

21. A table top is covered with 35 squares of equal size. The side of each square is 9 cm. What is the area of the table top?

- (1) 300 sq. cm (2) 2835 sq. cm  
(3) 225 sq. cm (4) 300 sq. cm

22. Which of the following set of fractions descending order?

- (1)  $5\frac{4}{7}, 5\frac{1}{2}, 4\frac{2}{3}, 4\frac{3}{4}$  (2)  $5\frac{1}{2}, 5\frac{4}{7}, 4\frac{3}{4}, 4\frac{2}{3}$   
(3)  $5\frac{4}{7}, 5\frac{1}{2}, 4\frac{2}{3}, 4\frac{3}{4}$  (4)  $5\frac{1}{2}, 5\frac{4}{7}, 4\frac{3}{4}, 4\frac{2}{3}$

23. The given table shows the area, in square kilometres, of four lakes. Lake E has greater area than lake M but a smaller area than lake S. Which could be the area of lake E ?

Area of Four Lakes	
Lake	Area ( $\text{km}^2$ )
H	59,600
M	57,800
S	82,100
O	18,960
E	?

- (1) 66,860  $\text{km}^2$  (2) 57,800  $\text{km}^2$   
(3) 25,700  $\text{km}^2$  (4) 18,960  $\text{km}^2$

24.  $588.6 \times 6.4 + 14.4 \div 3.6 = x$

- (1) 3252.84 (2) 1537.01  
(3) 3771.04 (4) 3992.44

25. Raghu is 31 years old and Kavita is 25 years old. Write the sum of their ages in Roman system

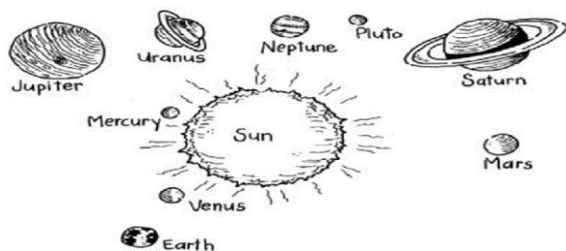
- (1) XXXIII (2) XLIII  
(3) LI (4) XLCIII

**PHYSICS**

26. If the plane of orbit of earth and moon would be in a straight line, what would happen?

- (1) No eclipse will take place ever.
- (2) Only solar eclipse will take place on every new moon day.
- (3) Only lunar eclipse will take place on every full moon day.
- (4) Both solar and lunar eclipse will take place on every new moon and full moon day respectively.

27. Distance of celestial bodies from the Earth is measured in



- (1) Fermimetre
- (2) Decameter
- (3) Light year
- (4) Light day

28. Identify from the following that show movements without changing their positions.



- (1) i and ii only
- (2) iii and iv only
- (3) i, iii and iv only
- (4) i and iii only

29. The width of the highway is 15 m. What is its value in cm?

- (1) 1500 cm
- (2) 200 cm
- (3) 20000 cm
- (4) 2 cm

30. Image formed by a concave mirror is

- (1) inverted
- (2) real
- (3) both 1 & 2
- (4) laterally inverted

31. Identify why a bulb does not glow even if correct connections are made?

I. Battery is dead

II. Filament is broken

III. Switch is closed

- (1) I only
- (2) II only
- (3) III only
- (4) I and II only

32. The total thickness of the coins arranged one above another is 2.7 cm. Find the total number of coins if thickness of each coin is 1 mm.

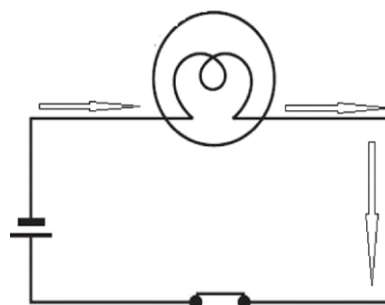


- (1) 270
- (2) 2700
- (3) 27
- (4) 7

33. Which one of the following part of a circuit changes chemical energy into electric energy?

- (1) Battery
- (2) Resistor
- (3) Connectors
- (4) Voltage source

34. A student draws a circuit as shown below:



What does the arrows indicate?

- (1) flow of electrons
- (2) flow of current
- (3) flow of proton
- (4) flow of neutron



35. Which of the following statements are incorrect?

- (I) Light is form of energy that travels in the form of waves.  
(II) Speed of light is fastest in vacuum  
(III) Light always follow curvilinear path.  
(IV) Light can pass through opaque object.
- (1) I, II, III & IV                      (2) I, II & III  
(3) III & IV                              (4) I, III, & IV

### CHEMISTRY

36. Water table refers to

- (1) Level of ground water  
(2) Level of sea water  
(3) Level of surface water  
(4) All of these

37. The method of separating finely suspended particles from a liquid, by whirling the liquid at a very high speed is called

- (1) Coagulation                      (2) Filtration  
(3) Crystallization                      (4) Centrifugation

38. Salt and sugar both are dissolved in a glass of water. How many new substances will form

- (1) 1                      (2) 2                      (3) 3                      (4) None

39. In wheat flour, flour is a wanted component and unwanted component is X.

Y is a another mixture, in which grain seeds is a wanted component and stalks is an unwanted components.

Identify X and Y respectively.

- (1) Wheat and Husk  
(2) Husk and Cut paddy  
(3) Husk and Saw dust  
(4) Husk and Sand

40. Which method of separation will be used to separate iron fillings from sand?

- (1) Magnetic separation  
(2) Sedimentation  
(3) Hand picking  
(4) All of these

41. Which of the following pair is an example of two immiscible liquids?

- (1) Water + Alcohol  
(2) Water + Ink  
(3) Water + Milk  
(4) Water + Kerosene Oil

42. Which of the following is/are the characteristics of wollen clothes ?

- (1) Heating our body  
(2) Not allowing body heat to escape  
(3) Absorbing heat from sunlight  
(4) All of these

43. Separation of fibres from its seeds is known as

- (1) weaving                      (2) spinning  
(3) knitting                      (4) ginning

44. Number of yarns used to make fabric by weaving and knitting are

- (1) two sets of yarn each case  
(2) single set in each case  
(3) two sets of yarn in weaving and single in knitting  
(4) single in weaving and two sets in knitting

45. From the below statements select correct one.

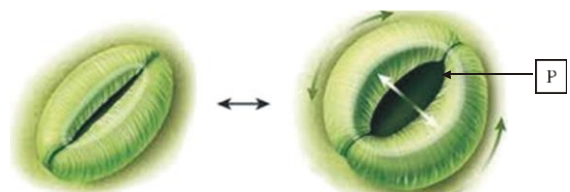
- (1) Every substance has a definite shape  
(2) Every substance has a indefinite volume  
(3) Every substance has a definite mass  
(4) None of these

**BIOLOGY**

46. How does the camel's hump help it to survive in the desert?
- It help the camel to balance its body while walking on sandy ground.
  - It stores fats which can provide the camel with energy during food shortage.
  - It protects the camel during sand storm.
  - It helps camel to get protection from the enemies.
47. Beri-Beri is a condition caused by the deficiency of a vitamin in our body. A regular intake of which of these food items will help in preventing it?
- Soya beans, Corn, Wheat-rich in vitamin E
  - Wheat, Oil seeds, Meat-rich in vitamin B<sub>1</sub>
  - Citrus fruit, Tomatoes -rich in vitamin C
  - Sweet potatoes, Carrots, Radish- rich in vitamin A
48. In cockroaches, the body parts helping in movement are
- three pairs of legs and two pairs of wings
  - two pairs of legs and two pairs of wings
  - two pairs of legs and three pairs of wings
  - none of these
49. Fish swims by
- forming loops alternately on two sides of the body
  - forming loops on single side
  - somersalting
  - alternate dipping and coming up
50. Intervertebral discs allow the vertebrae to move slightly and enable the backbone to bend forwards and backwards, that disc is made up of \_\_\_\_\_.
- Ligaments
  - Synovial fluid
  - Tendons
  - Cartilage

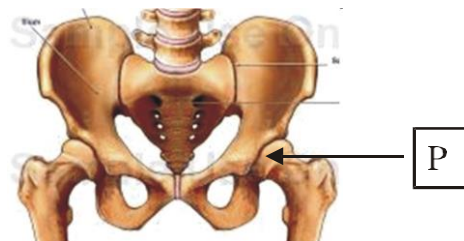
51. Fish can swim easily in water. Which one of the following is not responsible for movement of fish in water?
- Fish has streamlined body.
  - Fish has gills.
  - Fish body has flexible backbone.
  - Fish has powerful body muscles.
- (i) and (iii)
  - only (iv)
  - (i) and (iv)
  - only (ii)

52. Based on figure given below which substance is released by structure "P" during day time?



- Carbon dioxide gas
- Oxygen gas
- Nutrients
- Hydrogen

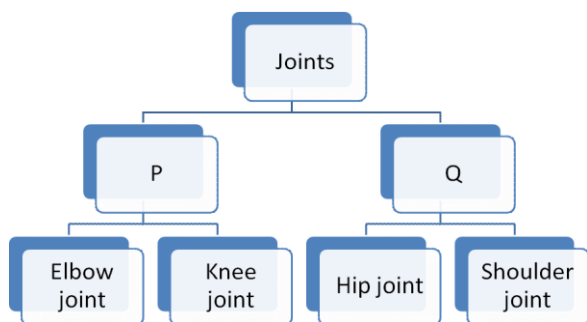
53. Which joint is present at "P" in given figure?



- Ball and socket joint
- Gliding joint
- Pivot joint
- Fibrous joints



54. Study the classification chart given below.



	P	Q
A	Gliding joint	Pivot joint
B	Hinge joint	Ball and socket joint
C	Pivot joint	Hinge joint
D	Hinge joint	Gliding joint

(1) A      (2) B      (3) C      (4) D

55. Balanced diet includes necessary vitamins and minerals in the diet. If balanced diet is not taken, there is possibility of deficiency diseases. Which mineral should be given to the women shown in the figure?



(1) Calcium      (2) Iodine  
(3) Potassium      (4) All of these

### GENERAL QUESTIONS

56. What comes next in the given series below?



(i)      (ii)      (iii)      (iv)



(a)      (b)      (c)      (d)  
(1)a      (2)b      (3)c      (4)d

57. Whom did Gandhiji consider his political Guru?

(1) Vinoba Bhave  
(2) B. G. Tilak  
(3) GopalKrishnaGokhale  
(4) Dadabhai Naoroji

58. In which one of the following States has India's largest private sector sea port been commissioned recently?

(1) Andhra Pradesh      (2) Karnataka  
(3) Kerala      (4) Tamil Nadu

59. Identify the correct simile from the following.

(1) as good as iron      (2) as blind as a bat  
(3) as weak as a lion      (4) as cold as mud

60. In which city is the famous Wall Street located?

(1) Moscow      (2) Los Angles  
(3) Beijing      (4) New York city





**CLASS24**

NSTSE MOCK TEST (STAGE - 1)\_CLASS - VI

**TEST - 2****ANSWER KEY**

Que.	1	2	3	4	5	6	7	8	9	10	11	12	13	14	15	16	17	18	19	20
Ans.	3	4	2	3	4	4	1	2	3	4	1	3	2	4	3	3	2	2	3	1
Que.	21	22	23	24	25	26	27	28	29	30	31	32	33	34	35	36	37	38	39	40
Ans.	2	2	1	3	3	4	3	2	1	3	4	3	1	1	3	1	4	4	2	1
Que.	41	42	43	44	45	46	47	48	49	50	51	52	53	54	55	56	57	58	59	60
Ans.	4	2	4	3	3	2	2	1	1	4	4	2	1	2	2	3	3	1	2	4

000

*Prepare to be a Winner With Class24***CLASS24**

NSTSE MOCK TEST (STAGE - 1)\_CLASS - VI

**TEST - 2****ANSWER KEY**

Que.	1	2	3	4	5	6	7	8	9	10	11	12	13	14	15	16	17	18	19	20
Ans.	3	4	2	3	4	4	1	2	3	4	1	3	2	4	3	3	2	2	3	1
Que.	21	22	23	24	25	26	27	28	29	30	31	32	33	34	35	36	37	38	39	40
Ans.	2	2	1	3	3	4	3	2	1	3	4	3	1	1	3	1	4	4	2	1
Que.	41	42	43	44	45	46	47	48	49	50	51	52	53	54	55	56	57	58	59	60
Ans.	4	2	4	3	3	2	2	1	1	4	4	2	1	2	2	3	3	1	2	4

000

*Prepare to be a Winner With Class24***CLASS24**

NSTSE MOCK TEST (STAGE - 1)\_CLASS - VI

**TEST - 2****ANSWER KEY**

Que.	1	2	3	4	5	6	7	8	9	10	11	12	13	14	15	16	17	18	19	20
Ans.	3	4	2	3	4	4	1	2	3	4	1	3	2	4	3	3	2	2	3	1
Que.	21	22	23	24	25	26	27	28	29	30	31	32	33	34	35	36	37	38	39	40
Ans.	2	2	1	3	3	4	3	2	1	3	4	3	1	1	3	1	4	4	2	1
Que.	41	42	43	44	45	46	47	48	49	50	51	52	53	54	55	56	57	58	59	60
Ans.	4	2	4	3	3	2	2	1	1	4	4	2	1	2	2	3	3	1	2	4

000

*Prepare to be a Winner With Class24*